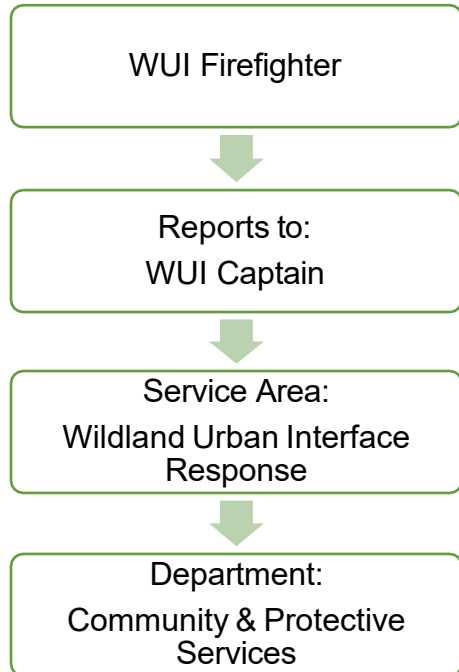




# WUI Firefighter Job Description



## Position Details

<b>Supervisory Role:</b>	Yes
<b>Union Scope Role:</b>	No
<b>Position Status:</b>	<input checked="" type="checkbox"/> Full-Time <input type="checkbox"/> Part-Time <input checked="" type="checkbox"/> Permanent <input type="checkbox"/> Temporary <input type="checkbox"/> Interim <input type="checkbox"/> Casual <input type="checkbox"/> Seasonal
<b>Hours per Week:</b>	35
<b>Work Location:</b>	Emergency Services Bldg
<b>Job Classification:</b>	Technical/Professional

## POSITION SUMMARY

Reporting to the Wildland Urban Interface (WUI) Captain, this grant funded position is responsible for WUI events, performing structure protection, fire suppression, rescue, dangerous goods control, fire service training, and fire prevention. This position will participate in the Town of Hinton’s (the “Town”) Operational Health & Safety Program and operate in compliance with all Standard Operating Procedures (SOPs), Policies, and Directives.

## WORK RESPONSIBILITIES

- Conduct preparedness, response, and operations in the wildland and WUI environments
- Under the direction of the WUI Captain, execute WUI education activities
- Respond to wildfires in the province in various locations
- Attend, deliver, and host training with the current provincial WUI teams
- Ensure vehicles and equipment are serviced and communicate repair needs to the Captain, Deputy Fire Chief, or Fire Chief
- Ensure all work activities are carried out safely
- Attend weekly training nights
- Support Health and Safety programs and initiatives



# WUI Firefighter Job Description

---

- Promote public awareness of departmental and Town activities
- Respond to emergencies when appropriate with First Aid
- Attend training courses
- Promote the professional development of firefighters
- Participate in fire prevention
- Participate in the following activities:
  - Fire suppression
  - Rescue
  - Transportation of dangerous goods
  - Wildland interface
  - Firefighting
  - Medical Response
  - Train Wrecks
  - Aviation incidents
  - Vehicle Rescue
  - Patient care
- Undertake other duties as assigned

## QUALIFICATIONS

- High School Diploma or GED
- Minimum 1 year's work experience performing Firefighter responsibilities
- Specialized Fire Training required:
  - AFCA 2020 S215 conversion and Slave Lake WUI course with bridging exam
  - NFPA 1001 – Standard Firefighter Level I & II
  - NFPA 1002 – Fire Apparatus Driver/Operator
  - NFPA 1006 – Vehicle Ex/Technical Rescue
  - PNFA 1072 – Hazardous Materials Response, Operations Level
- Specialized Fire Training preferred:
  - NFPA 1051 - Wildland Firefighting training
  - NFPA 1041 Level 1 Fire Service Instructor
- Valid First Aid and CPR Level C Certificate
- ICS 100
- Knowledge of the *Occupational Health and Safety Act (OH&S)* and *Regulations* related to firefighting, and Alberta Fire and Building Codes
- Satisfactory background screening is required for this position including a Criminal Record Check and a Vulnerable Sector Check
- A Valid Class 5 Driver's License with a satisfactory Driver's Abstract is required



# WUI Firefighter Job Description

---

## SKILLS & ABILITIES

- Ability to maintain a high degree of confidentiality, trustworthiness, and integrity
- Exceptional verbal and written communication skills
- Work collaboratively and effectively with others to set goals, resolve problems, and make decisions
- Ability to exercise good judgement within an emotionally challenging environment
- Must be able to communicate clearly and concisely under stressful situations and be able to work under arduous physical conditions as part of an active firefighter and rescue team
- Demonstrate effective interpersonal communication and conflict resolution skills
- Communicate effectively and diplomatically with the public
- Provide supervision, coaching, and mentorship to staff and volunteers
- Demonstrate a commitment to continuous training and professional development opportunities to meet firefighting requirements

## WORKING CONDITIONS

Details pertaining to the physical demands of the position can be found in the Physical Demands Analysis and Job Hazard Assessment with Health & Safety.

### Hours

Commit to an on-call schedule by responding to emergencies 24 hours a day, seven days a week.

### Physical Effort

Activities related to responding to an emergency. Must possess the agility, strength, and physical stamina to perform arduous and prolonged work under adverse and strenuous conditions. Varying levels of physical effort, including heavy lifting, climbing, sitting, walking, standing, pushing, pulling, reaching, driving, carrying. Repeated motion of tasks.

### Travel

Position requires responding to emergency situations within the community, province and surrounding district using emergency vehicles. Must maintain alertness and respond appropriately using defensive driving skills in various conditions (traffic, weather, distractions).



# WUI Firefighter Job Description

---

## Work Environment

Position requires responding to emergency situations such as active fires and vehicular accidents in and outside of the community in addition to moderate exposure to office and shop/yard environments. Significant exposure to the public in a service provision capacity. Potential exposure to biohazards. Risk of unknown variables in the provision of services.

## HEALTH & SAFETY

Ensure the Town of Hinton health and safety policies, procedures, directives, and safe work practices are followed in accordance with the *Occupational Health and Safety Act and Regulations*.

## APPROVALS

Established:	2025 01 10
Revised:	